

Positive association between COVID-19 deaths and influenza vaccination rates in elderly people worldwide

Christian Wehenkel

Instituto de Silvicultura e Industria de la Madera, Universidad Juárez del Estado de Durango, Durango, Mexico

ABSTRACT

Background: The coronavirus disease 2019 (COVID-19) pandemic, caused by severe acute respiratory syndrome coronavirus 2 (SARS-CoV-2), is an ongoing global health crisis, directly and indirectly impacting all spheres of human life. Some pharmacological measures have been proposed to prevent COVID-19 or reduce its severity, such as vaccinations. Previous reports indicate that influenza vaccination appears to be negatively correlated with COVID-19-associated mortality, perhaps as a result of heterologous immunity or changes in innate immunity. The understanding of such trends in correlations could prevent deaths from COVID-19 in the future. The aim of this study was therefore to analyze the association between COVID-19 related deaths and influenza vaccination rate (IVR) in elderly people worldwide.

Methods: To determine the association between COVID-19 deaths and influenza vaccination, available data sets from countries with more than 0.5 million inhabitants were analyzed (in total 39 countries). To accurately estimate the influence of IVR on COVID-19 deaths and mitigate effects of confounding variables, a sophisticated ranking of the importance of different variables was performed, including as predictor variables IVR and some potentially important geographical and socioeconomic variables as well as variables related to non-pharmaceutical intervention. The associations were measured by non-parametric Spearman rank correlation coefficients and random forest functions.

Results: The results showed a positive association between COVID-19 deaths and IVR of people ≥ 65 years-old. There is a significant increase in COVID-19 deaths from eastern to western regions in the world. Further exploration is needed to explain these findings, and additional work on this line of research may lead to prevention of deaths associated with COVID-19.

Subjects Epidemiology, Global Health, Immunology, Infectious Diseases, Public Health

Keywords SARS-CoV-2, Global health crisis, Risk factors, Virus interference, Geographical longitude, Lockdown, Face mask use

INTRODUCTION

The coronavirus disease 2019 (COVID-19) pandemic, caused by severe acute respiratory syndrome coronavirus 2 (SARS-CoV-2), is an ongoing global health crisis (Yuen *et al.*, 2020), directly and indirectly impacting all spheres of human life (Ozili & Arun, 2020).

Submitted 5 August 2020
Accepted 16 September 2020
Published 1 October 2020

Corresponding author

Christian Wehenkel,
wehenkel@ujed.mx

Academic editor
Antonio Palazón-Bru

Additional Information and
Declarations can be found on
page 15

DOI 10.7717/peerj.10112

© Copyright
2020 Wehenkel

Distributed under
Creative Commons CC-BY 4.0

OPEN ACCESS

More than 31,000,000 confirmed cases including more than 970,000 deaths have been documented worldwide, affecting 213 countries and territories around the world (<https://covid19.who.int/>).

Determining the factors influencing the severity of COVID-19 is important (*Armengaud et al., 2020*). Although COVID-19 disease does not only affect elderly people, the severity of symptoms increases with age (<https://www.cdc.gov/coronavirus/2019-ncov/need-extra-precautions/older-adults.html>; *Le Couteur, Anderson & Newman, 2020*). Several other risk factors have been found for severe COVID-19, such as comorbidities, dyspnea, chest pain, cough, expectoration, decreased lymphocytes, and increased inflammation indicators (*Li et al., 2020*). Low socioeconomic status is an additional risk factor (*Yancy, 2020*).

In response to the increasing numbers of COVID-19 cases and deaths, numerous non-pharmaceutical interventions have been implemented, including social distancing, border closures, school closures, measures to isolate symptomatic individuals and their contacts, and large-scale lockdowns of populations (*Courtemanche et al., 2020*; *Flaxman et al., 2020*). Some pharmacological measures have also (often controversially) been proposed in order to prevent COVID-19 disease or reduce its severity, such as the use of remdesivir (*Beigel et al., 2020*), dexamethasone (*RECOVERY Collaborative Group, 2020*), adjunctive therapies (https://files.covid19treatmentguidelines.nih.gov/guidelines/section/section_85.pdf) and COVID-19 candidate vaccines (*Graham, 2020*, <https://www.who.int/publications/m/item/draft-landscape-of-covid-19-candidate-vaccines>).

The term “heterologous immunity” is applied when an infection by one pathogen can induce and/or alter the immune response against another unrelated pathogen. Heterologous immunity can improve or decrease protective immunity against a given pathogen, and/or cause severe immunopathology or tolerance to self-antigens. Heterologous immunity can also result in non-specific effects (also called “heterologous effects”) of vaccines which affect unrelated infections and diseases, such as extending the protective outcomes of vaccinations (*Goodridge et al., 2016*; *Agrawal, 2019*). *Arokiaraj (2020)* reported a negative correlation between influenza vaccination rates (IVRs) and COVID-19 related mortality and morbidity. *Marín-Hernández, Schwartz & Nixon (2020)* also showed epidemiological evidence of an association between higher influenza vaccine uptake by elderly people and lower percentage of COVID-19 deaths in Italy. In a study analyzing 92,664 clinically and molecularly confirmed COVID-19 cases in Brazil, *Fink et al. (2020)* reported that patients who received a recent flu vaccine experienced on average 17% lower odds of death. Moreover, *Pawlowski et al. (2020)* analyzed the immunization records of 137,037 individuals who tested positive in a SARS-CoV-2 PCR. They found that polio, Hemophilus influenzae type-B, measles-mumps-rubella, varicella, pneumococcal conjugate (PCV13), geriatric flu, and hepatitis A/hepatitis B (HepA-HepB) vaccines, which had been administered in the past 1, 2, and 5 years, were associated with decreased SARS-CoV-2 infection rates.

By contrast, in a study with 6,120 subjects, *Wolff (2020)* reported that influenza vaccination was significantly associated with a higher risk of some other respiratory diseases, due to virus interference. In a specific examination of non-influenza viruses,

the odds of coronavirus infection (but not the COVID-19 virus) in vaccinated individuals were significantly higher, when compared to unvaccinated individuals (odds ratio = 1.36).

Given that heterologous immunity could improve protective immunity against COVID-19 and, thus, prevent COVID-19 deaths in the future, the aim in this study was to analyze the possible association between COVID-19 deaths and the IVR in elderly people worldwide. A negative association was expected.

MATERIALS AND METHODS

To look for an association between COVID-19 deaths and influenza vaccination, I analyzed available data sets from 39 countries, each with ≥ 0.5 million inhabitants. In smaller states (i.e., < 0.5 million inhabitants), the rate of erroneous identification of COVID-19 deaths may be particularly high due to the lack of expertise, measuring devices and experience. Moreover, in such microstates small absolute changes in COVID-19 deaths may result in extreme values of relative indices, such as COVID-19 deaths per million inhabitants (DPMI) and COVID-19 Case Fatality Ratio (CFR).

I analyzed the variables DPMI and CFR, based on documented COVID-19 cases per million inhabitants (CPMI) in 2020, COVID-19 tests per million inhabitants, and IVR (%) in people ≥ 65 years old in 2019 or latest available data (Table 1). I recorded the DPMI, CPMI and CFR data from the public web site <https://www.worldometers.info/coronavirus/>. Then, I calculated CFR as the rate of DPMI per CPMI. IVR data were also taken from <https://data.oecd.org/healthcare/influenza-vaccination-rates.htm>, <https://oecdcode.org/disclaimers/israel.html> and <https://www.statista.com/chart/16575/global-flu-immunization-rates-vary/> (retrieved on July 25, 2020). Vietnam's 2017 IVR was recorded from *Nguyen et al. (2020)*, and Singapore's 2016/2017 IVR from <https://www.todayonline.com/commentary/why-singapores-adult-vaccination-rate-so-low>.

To analyze the data, I first calculated the non-parametric Spearman rank correlation coefficient (r_s) and its R_s^2 and respective p -value (2-tailed) to determine any association between DPMI and CFR with IVR, using R (*R Core Team, 2017*). As the relationship between DPMI and the number of people tested for COVID-19 was not statistically significant based on r_s and its p -value, I did not modified (corrected) the DPMI data set. Then, I created regression curves by Generalized additive model (GAM) using the “ggplot2” package and function (method = “gam”) (*Wickham, Chang & Wickham, 2013*), also in R .

As the analysis included countries with different socioeconomic status, demographic structure, urban/rural settings, time of arrival of the pandemic and national control strategies, there may be complex interactions between IVR and other correlated predictor variables. With the aim of accurately estimating the influence of IVR on DPMI and CFR and mitigating the effects of confounding variables, I performed variable importance ranking, including as predictor variables IVR and some potentially important geographical, socioeconomic and non-pharmaceutical-intervention variables (*Escobar, Molina-Cruz & Barillas-Mury, 2020*). I used the centroid longitudes ($^\circ$) and latitudes ($^\circ$) of each country as geographical variables calculated by the “rgeos” and “rworldmap” packages, along with the “getMap” and “gCentroid” functions, implemented in

Table 1 Raw data (part 1). Countries with their influenza vaccination rate (IVR) (%) of people aged 65 and older in 2019 or latest available, COVID-19 deaths per million inhabitants (DPMI), COVID-19 Case Fatality Ratio (CFR) based on documented COVID-19 cases per million inhabitants (CPMI) in 2020, COVID-19 tests per million inhabitants.

| Country | IVR* (%) | Year of IVR | DPMI+ (N per M) | CPMI+ (N per M) | CFR+ | COVID-19 tests+ | Continent |
|-----------------|----------|-------------|-----------------|-----------------|-------|-----------------|------------------------|
| Australia | 73.0 | 2018/2019 | 6 | 547 | 0.011 | 151,037 | Australia and Ozeanien |
| Belgium | 59.1 | 2019 | 847 | 5,624 | 0.151 | 130,601 | Europe |
| Brazil | 71.8 | 2018/2019 | 402 | 11,078 | 0.036 | 23,094 | America |
| Canada | 59.0 | 2019 | 235 | 3,006 | 0.078 | 98,442 | America |
| Chile | 68.3 | 2019 | 472 | 17,964 | 0.026 | 78,678 | America |
| China | 7.0 | 2018/2019 | 3 | 58 | 0.052 | 62,814 | Asia |
| Croatia | 23.0 | 2017 | 31 | 1,168 | 0.027 | 26,932 | Europe |
| Czech Republic | 21.5 | 2019 | 34 | 1,413 | 0.024 | 61,332 | Europe |
| Denmark | 52.0 | 2019 | 106 | 2,319 | 0.046 | 243,677 | Europe |
| Estonia | 10.2 | 2019 | 52 | 1,532 | 0.034 | 87,692 | Europe |
| Finland | 49.5 | 2019 | 59 | 1,333 | 0.044 | 59,654 | Europe |
| France | 51.0 | 2019 | 462 | 2,765 | 0.167 | 45,683 | Europe |
| Germany | 34.8 | 2019 | 110 | 2,460 | 0.045 | 88,528 | Europe |
| Greece | 56.2 | 2019 | 19 | 400 | 0.048 | 42,244 | Europe |
| Hungary | 24.1 | 2019 | 62 | 458 | 0.135 | 33,116 | Europe |
| Ireland | 68.5 | 2019 | 357 | 5,235 | 0.068 | 121,496 | Europe |
| Israel | 59.8 | 2019 | 49 | 6,577 | 0.007 | 173,662 | Europe |
| Italy | 53.1 | 2019 | 581 | 4,067 | 0.143 | 107,848 | Europe |
| Japan | 48.0 | 2019 | 8 | 221 | 0.036 | 5,516 | Asia |
| Latvia | 11.7 | 2019 | 16 | 640 | 0.025 | 100,009 | Europe |
| Lithuania | 14.8 | 2019 | 29 | 736 | 0.039 | 182,847 | Europe |
| Luxembourg | 39.8 | 2019 | 179 | 9,665 | 0.019 | 618,326 | Europe |
| Mexico | 82.3 | 2018/2019 | 331 | 2,932 | 0.113 | 6,946 | America |
| Netherlands | 62.7 | 2019 | 358 | 3,077 | 0.116 | 49,709 | Europe |
| New Zealand | 62.0 | 2019 | 4 | 311 | 0.013 | 90,746 | Australia and Ozeanien |
| Norway | 38.2 | 2019 | 47 | 1,677 | 0.028 | 77,531 | Europe |
| Portugal | 60.8 | 2019 | 168 | 4,900 | 0.034 | 149,941 | Europe |
| Romania | 16.1 | 2017 | 112 | 2,272 | 0.049 | 56,571 | Europe |
| Singapore** | 14.0 | 2016/2017 | 5 | 8,523 | 0.001 | 199,896 | Asia |
| Slovak Republic | 12.5 | 2019 | 5 | 392 | 0.013 | 46,285 | Europe |
| Slovenia | 12.9 | 2019 | 55 | 994 | 0.055 | 61,108 | Europa |
| South Korea | 85.1 | 2019 | 6 | 275 | 0.022 | 29,619 | Asia |
| Spain | 54.9 | 2019 | 608 | 6,833 | 0.089 | 135,188 | Europe |
| Sweden | 52.2 | 2019 | 562 | 7,819 | 0.072 | 74,353 | Europe |
| Thailand | 12.0 | 2018/2019 | 0.8 | 47 | 0.017 | 9,817 | Asia |
| Turkey | 7.0 | 2019 | 66 | 2,668 | 0.025 | 53,707 | Europe |
| United Kingdom | 72.0 | 2019 | 673 | 4,398 | 0.153 | 214,532 | Europe |
| United States | 68.7 | 2019 | 450 | 12,929 | 0.035 | 159,672 | America |
| Vietnam*** | 12.0 | 2017 | 0 | 4 | 0.000 | 2,824 | Asia |

Notes:

* Taken from <https://data.oecd.org/healthcare/influenza-vaccination-rates.htm>, <https://oecdcode.org/disclaimers/israel.html> and <https://www.statista.com/chart/16575/global-flu-immunization-rates-vary/> on July 25, 2020.

** From <https://www.todayonline.com/commentary/why-singapores-adult-vaccination-rate-so-low>.

*** From *Nguyen et al. (2020)*.

† From <https://www.worldometers.info/coronavirus/> on July 25, 2020.

Table 2 Raw data (part 2). Countries with their centroid coordinates (longitude (Long) and latitude (Lat)), Degree of urbanization in 2020, Human Development Index (HDI) in 2018, Percent elder people in 2019 and Population density in 2018.

| Country | Long (°) | Lat (°) | Degree of urbanization (2020)* | HDI (2018)** | Percent elder people (%) (2019)*** | Population density (people per km ² of land area) (2018)**** |
|-----------------|----------|---------|--------------------------------|--------------|------------------------------------|---|
| Australia | 134.5 | -25.7 | 86.2 | 0.938 | 15.92 | 3.2 |
| Belgium | 4.6 | 50.6 | 98.1 | 0.919 | 19.01 | 377.4 |
| Brazil | -53.1 | -10.8 | 87.1 | 0.761 | 9.25 | 25.1 |
| Canada | -98.3 | 61.4 | 81.6 | 0.922 | 17.65 | 4.1 |
| Chile | -71.4 | -37.7 | 87.7 | 0.847 | 11.88 | 25.2 |
| China | 103.8 | 36.6 | 61.4 | 0.758 | 11.47 | 148.3 |
| Croatia | 16.4 | 45.1 | 57.6 | 0.837 | 20.86 | 73.0 |
| Czech Republic | 15.3 | 49.7 | 74.1 | 0.891 | 19.80 | 137.7 |
| Denmark | 10.0 | 56.0 | 88.1 | 0.930 | 19.97 | 138.0 |
| Estonia | 25.5 | 58.7 | 69.2 | 0.882 | 19.99 | 30.4 |
| Finland | 26.3 | 64.5 | 85.5 | 0.925 | 22.14 | 18.1 |
| France | 2.5 | 46.2 | 81.0 | 0.891 | 20.39 | 122.3 |
| Germany | 15.3 | 49.7 | 77.5 | 0.939 | 21.56 | 237.3 |
| Greece | 23.0 | 39.1 | 79.7 | 0.872 | 21.94 | 83.3 |
| Hungary | 19.4 | 47.2 | 71.9 | 0.845 | 19.69 | 108.0 |
| Ireland | -8.1 | 53.2 | 63.7 | 0.942 | 14.22 | 70.7 |
| Israel | 35.0 | 31.5 | 92.6 | 0.906 | 12.21 | 410.5 |
| Italy | 12.1 | 42.8 | 71.0 | 0.883 | 23.01 | 205.4 |
| Japan | 138.0 | 37.6 | 91.8 | 0.915 | 28.00 | 347.1 |
| Latvia | 24.9 | 56.9 | 68.3 | 0.854 | 20.34 | 31.0 |
| Lithuania | 23.9 | 55.3 | 68.0 | 0.869 | 20.16 | 44.7 |
| Luxembourg | 6.1 | 49.8 | 91.5 | 0.909 | 14.27 | 250.2 |
| Mexico | -102.5 | 23.9 | 80.7 | 0.767 | 7.42 | 64.9 |
| Netherlands | 5.3 | 52.1 | 92.2 | 0.933 | 19.61 | 511.5 |
| New Zealand | 171.5 | -41.8 | 86.7 | 0.921 | 15.99 | 18.4 |
| Norway | 15.3 | 68.8 | 83.0 | 0.954 | 17.27 | 14.5 |
| Portugal | -8.5 | 39.6 | 66.3 | 0.850 | 22.36 | 112.3 |
| Romania | 25.0 | 45.9 | 56.4 | 0.816 | 18.79 | 84.6 |
| Singapore | 103.8 | 1.4 | 100.0 | 0.935 | 12.39 | 7953.0 |
| Slovak Republic | 19.5 | 48.7 | 53.8 | 0.857 | 16.17 | 113.3 |
| Slovenia | 14.8 | 46.1 | 55.1 | 0.902 | 20.19 | 103.0 |
| South Korea | 127.8 | 36.4 | 81.4 | 0.906 | 15.06 | 529.4 |
| Spain | -3.6 | 40.2 | 80.8 | 0.893 | 19.65 | 93.7 |
| Sweden | 16.7 | 62.8 | 88.0 | 0.937 | 20.20 | 25.0 |
| Thailand | 101.0 | 15.1 | 51.4 | 0.765 | 12.41 | 135.9 |
| Turkey | 35.2 | 39.1 | 76.1 | 0.806 | 8.73 | 107.0 |
| United Kingdom | -2.9 | 54.1 | 83.9 | 0.920 | 18.51 | 274.7 |
| United States | -112.5 | 45.7 | 82.7 | 0.920 | 16.21 | 35.7 |
| Vietnam | 106.3 | 16.6 | 37.3 | 0.693 | 7.55 | 308.1 |

Notes:

* <https://www.cia.gov/library/publications/the-world-factbook/fields/349.html>.

** <http://hdr.undp.org/en/composite/HDI>.

*** https://data.worldbank.org/indicator/SP.POP.65UP.TO.ZS?name_desc=false.

**** <https://data.worldbank.org/indicator/EN.POP.DNST>, all retrieved on July 13, 2020.

Table 3 Raw data (part 3). Countries with some Covid-19 measures (degree of mask requirements in public, lockdown degree and lockdown beginning).

| Country | Degree of mask requirement* | Lockdown degree | Lockdown beginning | Sources about lockdown (retrieved on Aug 13, 2020) |
|----------------|--|------------------|--------------------|---|
| Australia | Parts of Country | Lockdown | 3/23/20 | https://www.straitstimes.com/asia/australianz/australia-starts-lockdown-measures-as-coronavirus-cases-jump |
| Belgium | Full Country | Lockdown | 3/17/20 | https://www.euractiv.com/section/coronavirus/news/belgium-enters-lockdown-over-coronavirus-crisis-until-5-april/ |
| Brazil | Parts of Country | Lockdown | 5/5/20 | https://www.reuters.com/article/us-health-coronavirus-brazil-lockdown/major-brazilian-cities-set-lockdowns-as-virus-spreads-idUSKBN22H2V3 |
| Canada | Parts of Country | Partial lockdown | 3/17/20 | https://www.manitoulin.ca/updated-canada-goes-on-covid-19-lockdown/ |
| Chile | Full Country | Partial lockdown | 3/25/20 | https://www.gob.cl/noticias/ministerio-de-salud-anuncia-cuarentena-total-para-siete-comunas-de-la-region-metropolitana/ |
| China | None, but voluntary Universal Mask Usage | Lockdown | 1/23/20 | https://www.who.int/bulletin/volumes/98/7/20-254045/en/ |
| Croatia | Full Country | Lockdown | 3/18/20 | https://www.telegram.hr/zivot/koronavirus-krizni-stozer-danas-ce-objaviti-sto-se-zatvara-u-hrvatskoj/ ; https://m.vecernji.hr/vijesti/oxford-hrvatska-ima-najstroze-mjere-u-europi-iza-su-samo-srbija-i-sirija-1389281 |
| Czech Republic | Full Country | Lockdown | 3/16/20 | https://archiv.radio.cz/en/section/breaking/czech-republic-severely-limits-freedom-of-movement-in-order-to-slow-down-coronavirus-spread |
| Denmark | None | Lockdown | 3/13/20 | https://nyheder.tv2.dk/samfund/2020-03-11-danmark-lukker-ned-her-er-regeringens-nye-tiltag |
| Estonia | None, but Recommends Masks | No lockdown | | https://www.euronews.com/2020/05/13/coronavirus-lockdown-latvia-lithuania-and-estonia-re-open-borders-to-each-other |
| Finland | None, but Recommends Masks | Partial lockdown | 3/28/20 | https://newseu.cgtn.com/news/2020-04-16/Finland-to-lift-coronavirus-lockdown-in-region-around-capital-PIiAE4MM36/index.html |
| France | Full Country | Lockdown | 3/17/20 | https://www.leparisien.fr/societe/coronavirus-etat-d-urgence-aux-etats-unis-800-nouveaux-cas-en-france-79-morts-au-total-suivez-notre-direct-14-03-2020-8279826.php |
| Germany | Full Country | Lockdown | 3/23/20 | https://www.welt.de/politik/deutschland/article206725829/Coronavirus-Deutschland-Kontaktverbote-zu-mehr-als-zwei-Personen-Friseure-zu.html |
| Greece | Full Country | Lockdown | 3/23/20 | https://www.in.gr/2020/04/23/politics/se-ekseliksi-enimerosi-tou-kyvernitikou-ekprosopou-steliou-petsa-2/ |
| Hungary | Parts of Country | Lockdown | 3/28/20 | https://www.theguardian.com/world/2020/mar/30/hungary-jail-for-coronavirus-misinformation-viktor-orban |
| Ireland | No, but Recommends Masks | Lockdown | 3/12/20 | https://www.irishtimes.com/news/health/coronavirus-schools-colleges-and-childcare-facilities-in-ireland-to-shut-1.4200977 |
| Israel | Full Country | Lockdown | 4/1/20 | https://www.haaretz.com/israel-news/coronavirus-israeli-health-minister-netanyahu-mossad-chief-quarantine-1.8720108 ; https://www.timesofisrael.com/israelis-will-be-required-to-wear-face-masks-outdoors-under-new-order/ |
| Italy | Full Country | Lockdown | 2/25/20 | https://metro.co.uk/2020/02/25/towns-italy-lockdown-coronavirus-12298246/ |
| Japan | No, but Universal Mask Usage | No lockdown | | https://asia.nikkei.com/Spotlight/Coronavirus/Japan-quietly-reopens-as-much-of-world-locks-down |
| Latvia | Full Country | No lockdown | | https://www.euronews.com/2020/05/13/coronavirus-lockdown-latvia-lithuania-and-estonia-re-open-borders-to-each-other |
| Lithuania | Full Country | No lockdown | | https://www.euronews.com/2020/05/13/coronavirus-lockdown-latvia-lithuania-and-estonia-re-open-borders-to-each-other |

Table 3 (continued)

| Country | Degree of mask requirement* | Lockdown degree | Lockdown beginning | Sources about lockdown (retrieved on Aug 13, 2020) |
|-----------------|--|------------------|--------------------|---|
| Luxembourg | Full Country | Lockdown | 4/15/20 | https://www.tageblatt.lu/headlines/pressekonferenz-nach-dem-regierungsrat-kommt-das-ende-des-lockdowns/ |
| Mexico | Full Country | Lockdown | 3/23/20 | https://www.eluniversal.com.mx/english/mexico-city-closes-museums-bars-nightclubs-and-movie-theaters-bid-halt-coronavirus-spread |
| Netherlands | Full Country | Lockdown | 3/12/20 | Maarten Keulemans (12 March 2020). "Are we doing enough? RIVM boss Van Dissel: 'As soon as something indicates infection in the family: isolation'". <i>de Volkskrant</i> (in Dutch). Retrieved 13 March 2020. |
| New Zealand | None | Lockdown | 3/26/20 | https://www.newstalkzb.co.nz/news/national/coronavirus-covid-19-state-of-emergency-declared-in-new-zealand-50-new-cases-confirmed/ |
| Norway | None | Lockdown | 3/12/20 | https://www.nrk.no/norge/alle-utdanningsinstitusjoner-stenges-_flere-arrangementer-og-virksomheter-far-forbud-1.14940952 |
| Portugal | Full Country | Lockdown | 3/19/20 | http://www.presidencia.pt/?idc=22&idi=176060 |
| Romania | Full Country | Lockdown | 3/25/20 | http://www.ms.ro/2020/03/25/buletin-informativ-25-03-2020/ |
| Singapore | Full Country | Lockdown | 4/7/20 | https://www.channelnewsasia.com/news/business/suntec-city-waives-april-rent-for-tenants-covid-19-12614802 |
| Slovak Republic | Full Country | Lockdown | 3/12/20 | https://spectator.sme.sk/c/22356193/emergency-situation-applies-from-thursday-morning.html?ref=njctse |
| Slovenia | Full Country | Lockdown | 3/13/20 | https://www.rtvsllo.si/zdravje/novi-koronavirus/katalonija-zeli-razglasiti-karanteno-za-celotno-pokrajino/517068 |
| South Korea | None, but voluntary Universal Mask Usage | No lockdown | | https://www.sciencemag.org/news/2020/03/coronavirus-cases-have-dropped-sharply-south-korea-whats-secret-its-success |
| Spain | Full Country | Lockdown | 3/14/20 | https://administracion.gob.es/pag_Home/atencionCiudadana/Estado-de-alarma-crisis-sanitaria.html#.Xn3xj0dKjIU |
| Sweden | None | No lockdown | | Sayers, Freddy (17 April 2020). Swedish expert: why lockdowns are the wrong policy—The Post. UnHerd. |
| Thailand | Full Country | Lockdown | 4/3/20 | https://www.bangkokpost.com/thailand/general/1891910/curfew-starts-today |
| Turkey | Full Country | Partial lockdown | 3/21/20 | https://www.bbc.com/news/world-europe-52831017 ; https://www.aa.com.tr/tr/koronavirus/cumhurbaskanligi-sozcusu-kalin-ilk-orta-ve-liseler-1-hafta-universiteler-3-hafta-tatil-edilecek/1763918 |
| United Kingdom | Full Country | Lockdown | 3/23/20 | https://www.thesun.co.uk/news/11304061/uk-coronavirus-lockdown-month-lasting-start-end/ |
| United States | Parts of Country | Lockdown | 3/19/20 | https://www.wsj.com/articles/china-reports-no-new-domestic-coronavirus-infections-for-the-first-time-since-outbreak-started-11584611233 |
| Vietnam | Full Country | Lockdown | 4/1/20 | https://e.vnexpress.net/news/news/covid-19-lockdown-hanoi-hospital-lacks-food-necessities-for-3-500-inmates-4077071.html |

Note:

* <https://masks4all.co/what-countries-require-masks-in-public/> (retrieved on Aug 13, 2020).

R (version 3.3.4; *R Core Team, 2017*). For each country considered, the study recorded socioeconomic variables as the degree of urbanization (DUR) in 2020 (<https://www.cia.gov/library/publications/the-world-factbook/fields/349.html>), the population density (PD) in 2018 (<https://data.worldbank.org/indicator/EN.POP.DNST>), the Human Development Index (HDI) in 2018 (<http://hdr.undp.org/en/composite/HDI>) and the percentage of elderly people (PEP) in 2019 (https://data.worldbank.org/indicator/SP.POP.65UP.TO.ZS?name_desc=false), which were all retrieved on July 13, 2020 (Table 2). Finally, I recorded

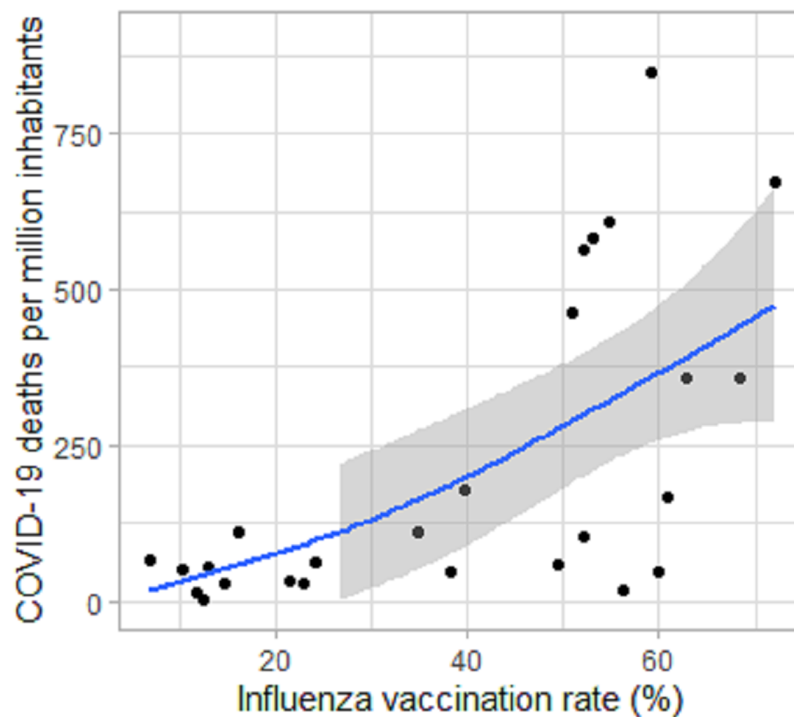


Figure 1 Association of COVID-19 deaths per million inhabitants (DPMI) up to July 25, 2020 with influenza vaccination rate (IVR) of people aged 65 and older in 2019 or latest data available in Europe. Association of COVID-19 deaths per million inhabitants (DPMI) up to July 25, 2020 with influenza vaccination rate (IVR) of people aged 65 and older in 2019 or latest data available in Europe (26 countries with more than 0.5 million inhabitants). The mean (blue line) and standard deviation (grey area) are based on generalized additive models (GAM); r_s (IVR \times DPMI) = +0.687 with $p = 0.00015$.

Full-size DOI: 10.7717/peerj.10112/fig-1

two aspects as COVID-19 prevention measures, that is, the degree of requirement to use masks (mask) in public (with three degrees: none, parts of country, full country) (<https://masks4all.co/what-countries-require-masks-in-public/>) and the lockdown degree (lockdown) (with three levels: no lockdown, partial lockdown, nationwide lockdown); all of these sources and the noted in Table 3 were consulted on Aug 13, 2020.

Variable importance ranking was carried out using the “party” package and the non-parametric random forest function “cforest”, along with Out of bag score (with the default option “controls = cforest_unbiased” and the conditional permutation importance “varimp(obj, conditional = TRUE)”). Following the permutation principle of the “mean decrease in accuracy” importance, this machine learning algorithm guarantees unbiased variable importance for predictor variables of different types (Strobl *et al.*, 2008).

To mitigate the effects of confounding factors, IVR, DPMI and CFR evaluations were also conducted for countries with similar social conditions (>50% of DUR, HDI of >0.80, >15% of PEP, and PD between 25 and 350 inhabitants per km²) (Escobar, Molina-Cruz & Barillas-Mury, 2020) and for countries with similar longitudes (10–20° in parts of Europe and 100–140°, East and Southeast Asia along with Australia and New Zealand).

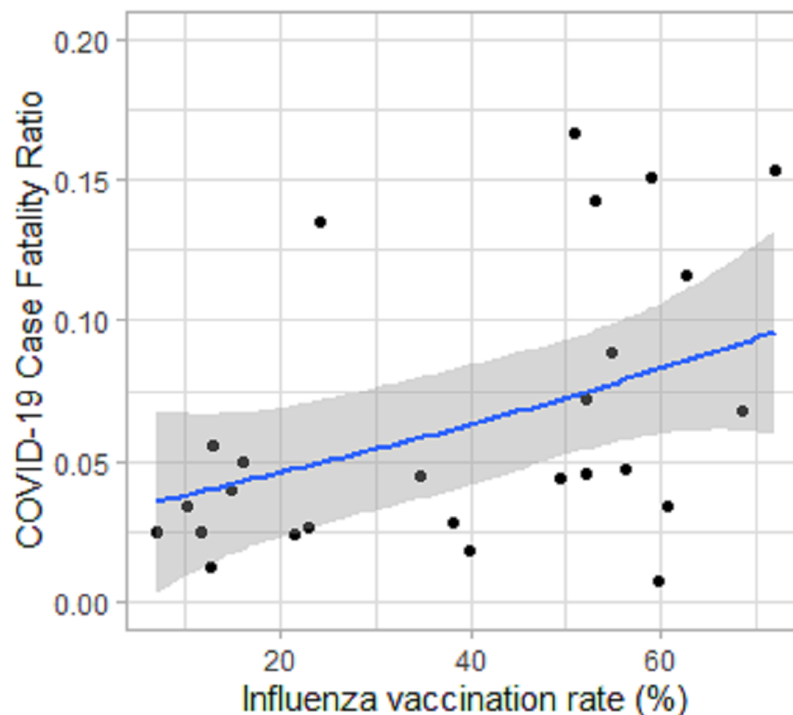


Figure 2 Association of COVID-19 Case Fatality Ratio (CFR) up to July 25, 2020 with influenza vaccination rate (IVR) of people aged 65 and older in 2019 or latest data available in Europe. Association of COVID-19 Case Fatality Ratio (CFR) up to July 25, 2020 with influenza vaccination rate (IVR) of people aged 65 and older in 2019 or latest data available in Europe (26 countries with more than 0.5 million inhabitants). The mean (blue line) and standard deviation (grey area) are based on generalized additive models (GAM); $r_s(\text{IVR} \times \text{CFR}) = +0.629$ with $p = 0.00075$.

Full-size DOI: 10.7717/peerj.10112/fig-2

As IVR and the other eight predictor variables were not strongly correlated ($|r_s| \leq 0.57$; $r_s(\text{IVR} \times \text{DUR}) = +0.52$; $r_s(\text{IVR} \times \text{Long}) = -0.46$; $r_s(\text{IVR} \times \text{HDI}) = 0.36$), therefore, I included these variables in non-parametric Random Forest (RF) models of DPMI and CFR, including a 5-fold cross validation approach, repeated 30 times using the package “caret” together with the function “train” (Venables & Ripley, 1999; Williams et al., 2018, <http://topepo.github.io/caret/index.html>) in R software. Finally, I evaluated the goodness-of-fit of the regression model using the (pseudo) coefficient of determination (R^2) and the root mean square error (RMSE).

RESULTS

For the 26 European countries considered, the results indicated that COVID-19 DPMI and the COVID-19 CFR were positively and statistically significantly associated with IVR in people ≥ 65 years-old in 2019 or latest data available ($r_s(\text{IVR} \times \text{DPMI}) = +0.62$ with $p = 0.0008$, $R_s^2(\text{IVR} \times \text{DPMI}) = 0.38$; $r_s(\text{IVR} \times \text{CFR}) = +0.50$ with $p = 0.01$, $R_s^2(\text{IVR} \times \text{CFR}) = 0.25$) (Figs. 1 and 2; Table 4). In evaluations including only countries with similar social conditions, $r_s(\text{IVR} \times \text{DPMI})$ was equal to $+0.65$ ($p = 0.002$, $N = 20$) and $r_s(\text{IVR} \times \text{CFR}) +0.48$ ($p = 0.03$, $N = 20$). In analyses including only countries with similar longitude of the country centroid (Long), $r_s(\text{IVR} \times \text{DPMI})$ was equal to $+0.83$ ($p = 0.003$,

Table 4 Spearman correlations (r_s) of COVID-19 deaths per million inhabitants (DPMI) with nine predictor variables. Spearman correlations (r_s) of COVID-19 deaths per million inhabitants (DPMI) with the variables (var): IVR = influenza vaccination rate (IVR, %) of people aged 65 and older in 2019 or latest data available, Long and Lat = Longitude and Latitude of the country centroid ($^{\circ}$), DUR = Degree of urbanization in 2020, HDI = Human Development Index in 2018, PEP = Percent elder people in 2019, PD = Population density in 2018, Mask = the requirement degree of using masks in public (with three degrees: none, parts of country, full country), Lockdown = lockdown degree (with three levels: no lockdown, partial lockdown, nationwide lockdown) and their p values based on 26 countries in Europe (Tables 1–3).

| var | r_s (DPMI \times var) | p value |
|-----------|---------------------------|---------------|
| Long | -0.65 | 0.0003 |
| IVR | 0.62 | 0.0008 |
| DUR | 0.43 | 0.0273 |
| PD | 0.41 | 0.0375 |
| HDI | 0.38 | 0.0533 |
| Lockdown | 0.25 | 0.2146 |
| PEP | -0.07 | 0.7387 |
| Lat (abs) | -0.02 | 0.9313 |
| Mask | 0 | 0.9949 |

Note:

Bold values statistically significant after Bonferroni correction ($\alpha = 0.0019$).

$N = 10$) (Long from 10° to 20°) and r_s (IVR \times DPMI) $+0.76$ ($p = 0.046$, $N = 7$) (Long from 100° to 140°).

At worldwide level (39 countries studied), the positive associations between DPMI and IVR were also statistically significant (r_s (IVR \times DPMI) $= +0.49$ with $p = 0.0016$, R_s^2 (IVR \times DPMI) $= 0.24$) (Fig. 3; Table 5). However, the relationships between IVR and CFR were not statistically significant.

In the IVR interval from 7% to 50%, the association was not significant, although a trend for DPMI and CFR to be positively associated with IVR was observed. DPMI and CFR varied strongly when IVR was 50% or higher (Figs. 1–3).

Worldwide, the unbiased ranking showed the degree of importance of each variable analyzed. The variables Long (with 55.9% and 52.3%) and IVR (with 36.3% and 24.5%) were by far the most important of the nine variables used to predict DPMI and CFR, respectively. The DUR in 2020 was the third most important variable, with an importance of 5.7% for predicting DPMI. The PEP in 2019 was the third most important variable (11.5%) in the CFR model (Figs. 4 and 5). The nine predictor variables considered in this study explained 63% of the variation in DPMI (RMSE = 161.9) and 43% of the variation in CFR (RMSE = 0.039).

DISCUSSION

Contrary to expectations, the present worldwide analysis and European sub-analysis do not support the previously reported negative association between COVID-19 deaths (DPMI) and IVR in elderly people, observed in studies in Brazil and Italy (Fink *et al.*, 2020; Marín-Hernández, Schwartz & Nixon, 2020). Previous studies attributed the beneficial effect of influenza vaccination in reducing severity of COVID-19 disease to better

Table 5 Spearman correlations (r_s) of COVID-19 deaths per million inhabitants (DPMI) and COVID-19 Case Fatality Ratio (CFR) with nine predictor variables. Spearman correlations (r_s) of COVID-19 deaths per million inhabitants (DPMI) and COVID-19 Case Fatality Ratio (CFR) with the variables: IVR = influenza vaccination rate (%) of people aged 65 and older in 2019 or latest available, Long = Longitude of the centroid of the country ($^{\circ}$), Latitude of the centroid of the country ($^{\circ}$), DUR = Degree of urbanization in 2020, HDI = Human Development Index in 2018, PEP = Percent elder persons in 2019, PD = Population density in 2018, Mask = the requirement degree of using masks in public (with three degrees: none, parts of country, full country), Lockdown = lockdown degree (with three levels: no lockdown, partial lockdown, nationwide lockdown), based on 39 countries worldwide (Tables 1–3).

| r_s | DPMI | CFR |
|------------------------------|---------------|---------------|
| Long | -0.81 | -0.56 |
| IVR | 0.49 | 0.25 |
| DUR | 0.32 | 0.39 |
| Lat (abs) | 0.32 | 0.03 |
| HDI | 0.20 | 0.10 |
| PEP | 0.15 | 0.38 |
| Mask | 0.14 | -0.01 |
| Lockdown | 0.08 | 0.09 |
| PD | -0.07 | -0.01 |
| p values | | |
| Long | 0 | 0.0002 |
| IVR | 0.0016 | 0.1275 |
| DUR | 0.0436 | 0.8698 |
| Lat (abs) | 0.0451 | 0.0155 |
| HDI | 0.2167 | 0.5529 |
| PEP | 0.3523 | 0.0174 |
| Mask | 0.3819 | 0.9436 |
| Lockdown | 0.6448 | 0.5980 |
| PD | 0.6713 | 0.9347 |

Note:

Bold values statistically significant after Bonferroni correction ($\alpha = 0.0019$).

prevention of potential influenza-SARS-CoV-2 coinfections (Arokiaraj, 2020) and, more likely, to changes in innate immunity (Netea et al., 2020). The innate immune response induced by recent vaccination could result in more rapid and efficient SARS-CoV-2 clearance, preventing progressive dissemination into lower areas of lung tissues (Fink et al., 2020).

The negative association between the proportion of DPMI and IVR found in Italy was explained as probably caused by (i) a higher influenza vaccine rate occurring in higher economic groups with overall better health, (ii) chance, (iii) a relationship with seasonal respiratory virus infections, or (iv) an unrelated mechanistic association (Marín-Hernández, Schwartz & Nixon, 2020). However, the induction of cross-neutralizing antibodies and T-cells that directly target other RNA viruses like SARS-CoV-2 and cross-protection seem unlikely, given the extraordinary diversity of influenza viruses (Fink et al., 2020).

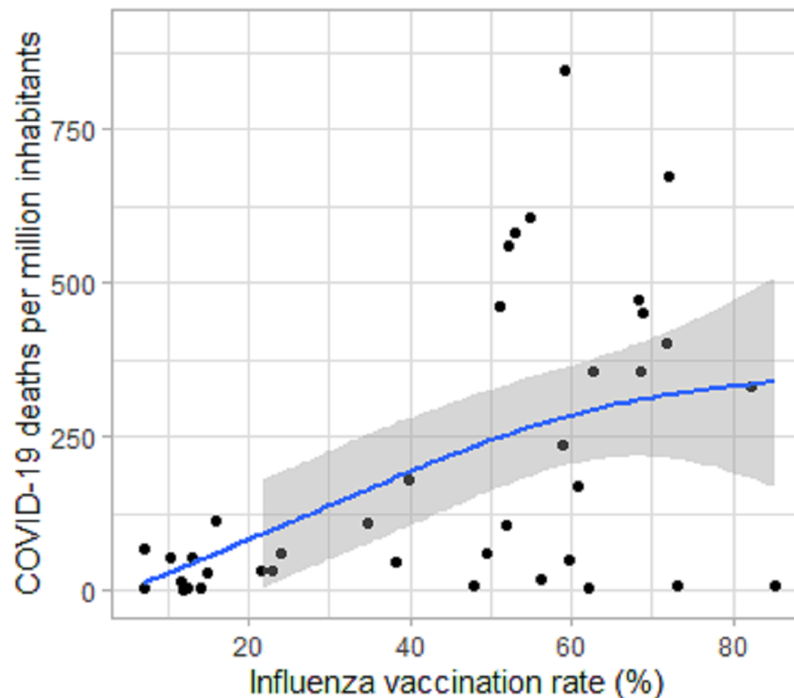


Figure 3 Association of COVID-19 deaths per million inhabitants (DPMI) up to July 25, 2020 with influenza vaccination rate of people aged 65 and older in 2019 or latest data available worldwide. Association of COVID-19 deaths per million inhabitants (DPMI) up to July 25, 2020 with influenza vaccination rate of people aged 65 and older in 2019 or latest data available worldwide (39 countries with more than 0.5 million inhabitants). The mean (blue line) and standard deviation (grey area) are based on generalized additive models (GAM); r_s (IVR \times DPMI) = +0.487 with $p = 0.0017$.

Full-size  DOI: 10.7717/peerj.10112/fig-3

Therefore, the above-mentioned arguments cannot explain the positive, direct or indirect relationship between IVR and both DPMI and CFR found in this study, which was confirmed by an unbiased ranking variable importance (Figs. 4 and 5) using RF models. The influenza vaccine may increase influenza immunity at the expense of reduced immunity to SARS-CoV-2 by some unknown biological mechanism, as suggested by *Cowling et al. (2012)* for non-influenza respiratory virus. Alternatively, weaker temporary, non-specific immunity after influenza viral infection could cause this positive association due to stimulation of the innate immune response during and for a short time after infection (*McGill, Heusel & Legge, 2009; Khaitov et al., 2009*). People who had received the influenza vaccination would have been protected against influenza but not against other viral infections, due to reduced non-specific immunity in the following weeks (*Cowling et al., 2012*), probably caused by virus interference (*Isaacs & Lindenmann, 1957; Seppälä et al., 2011; Wolff, 2020*). Although existing human vaccine adjuvants have a high level of safety, specific adjuvants in influenza vaccines should also be tested for adverse reactions, such as additionally increased inflammation indicators (*Petrovsky, 2015*) in COVID-19 patients with already strongly increased inflammation (*Qin et al., 2020*).

The strong variation in DPMI and CFR from an IVR of about 50% or larger may be the result of interactions among the different measures applied in the analyzed countries

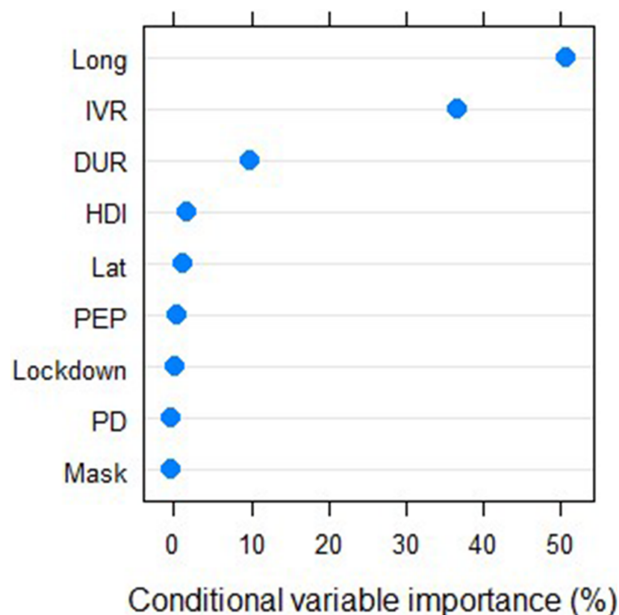


Figure 4 Unbiased Conditional variables importance ranking to predict COVID-19 deaths per million inhabitant. Unbiased conditional variables importance ranking (%) to predict COVID-19 deaths per million inhabitants using the package “party” and the non-parametric random forest function “cforest” in the software R; IVR = influenza vaccination rate, Long = centroid longitude (°), Lat = centroid latitude (°), DUR = degree of urbanization in 2020, HDI = Human Development Index in 2018, PEP = percent of elder people in 2019, PD = population density in 2018, mask = the requirement degree of using masks in public (with three degrees: none, parts of country, full country), lockdown = lockdown degree (with three levels: no lockdown, partial lockdown, nationwide lockdown) of each country, at worldwide level (39 countries studied). [Full-size !\[\]\(b345a1c4255362eec3746050dd71ccac_img.jpg\) DOI: 10.7717/peerj.10112/fig-4](https://doi.org/10.7717/peerj.10112/fig-4)

(Figs. 1–3), for example, initiation of interventions, emergency plans and health systems against COVID-19. For example, Australia and South Korea had a very low DPMI and CFR compared with Belgium and United Kingdom (Table 1).

The high correlation between the longitude of the country centroid and DPMI and CFR emphasize a significant increase in CP and CFR from eastern to western regions in the world (Table 5; Figs. 4 and 5), as confirmed by *Leung, Bulterys & Bulterys (2020)* and *Skórka et al. (2020)*. Longitude could act as a proxy for variables such as lifestyle, social behavior, genetics, geographically isolated and remote populations, which may also be associated with CP and CFR. In the severe 1918–1919 influenza pandemic, remote or isolated populations were also affected, at least partly because of the lack of prior immunity in locations that had not been recently affected by any form of influenza (*Mathews et al., 2009*). Therefore, crossing geographical and ecological barriers also is a key factor in spreading diseases (*Hallatschek & Fisher, 2014; Murray et al., 2015*).

Both DPMI and CFR were weakly and positively correlated ($p < 0.05$) with the absolute value of geographical latitude ($\text{abs}(\text{Lat})$), DUR, PEP and PD (Tables 4 and 5). In a global analysis, *Escobar, Molina-Cruz & Barillas-Mury (2020)* also found positive associations between COVID-19 mortality and the percentage of population aged ≥ 65 years and urbanization, but still more strongly with the Human Development Index. *Leung, Bulterys & Bulterys (2020)* also reported positive associations between latitude,

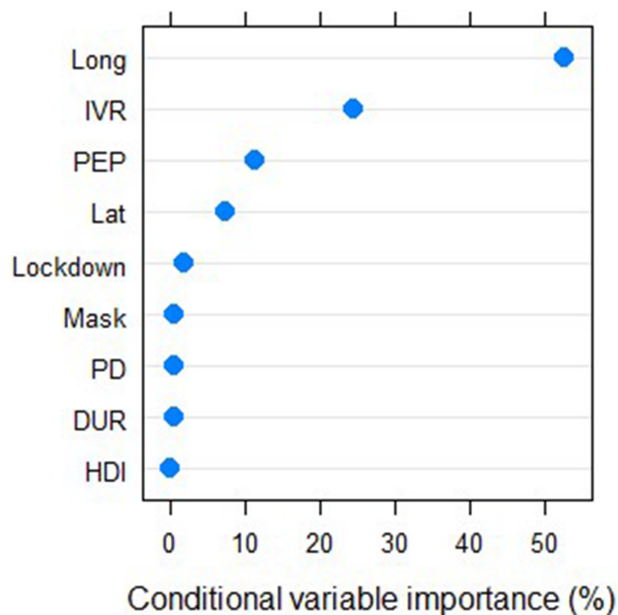


Figure 5 Conditional variables importance ranking to predict COVID-19 Case Fatality Ratio. Unbiased conditional variables importance ranking (%) to predict COVID-19 Case Fatality Ratio using the package “party” and the non-parametric random forest function “cforest” in the software R; IVR = influenza vaccination rate, Long = centroid longitude (°), Lat = centroid latitude (°), DUR = degree of urbanization in 2020, HDI = Human Development Index in 2018, PEP = percent of elder people in 2019, PD = population density in 2018, mask = the requirement degree of using masks in public (with three degrees: none, parts of country, full country), lockdown = lockdown degree (with three levels: no lockdown, partial lockdown, nationwide lockdown) of each country, at worldwide level (39 countries studied). [Full-size !\[\]\(1679558f37f6db0dd8360a2a7e913e90_img.jpg\) DOI: 10.7717/peerj.10112/fig-5](https://doi.org/10.7717/peerj.10112/fig-5)

temperature by week and by month prior to the first reported COVID-19 case. Lower temperature at northern latitudes was a strong independent predictor of national COVID-19 mortality.

Although countywide lockdowns and use of face masks by the general public should reduce COVID-19 transmission (Conyon, He & Thomsen, 2020; Eikenberry et al., 2020), the variables lockdown degree and the degree of requirement for mask use in public were not associated with DPMI and CFR in the present study (Tables 4 and 5; Figs. 4 and 5). Leffler et al. (2020) reported in a global study that internal lockdown requirements were not associated with mortality, but that in countries that recommended use of face masks early on at the national level, the COVID-19 death rate was lower than expected.

Although countywide lockdowns were proclaimed in many countries, the restrictive measures and their implementations differed in degree, strictness and implementation date in relation to the advance of the disease (see references in Table 3). Also, although many countries have required masks in public, the mask quality and correct use may differ from country to country. In this regard, Fischer et al. (2020) found that the use of ineffective masks could be counterproductive. This could explain the non-significant differences between the means of DPMI among countries with and without one or both requirements, lockdown and masks.

Finally, the study is limited by the fact that I didn't normalize the time of arrival of the pandemic. Moreover, the associations found may change in the future because the COVID-19 pandemic was not over at the end of the study.

CONCLUSIONS

Given the positive relationship between IVR and the number of deaths per million found in this study, further exploration would be valuable to explain these findings and to make conclusions. Additional work on this line of research may also yield results to improve prevention of COVID-19 deaths.

ACKNOWLEDGEMENTS

I am grateful to María del Socorro González-Elizondo and José Ciro Hernández-Díaz for their comments on the manuscript, and to Dr. Daniela Marín-Hernández and an anonymous reviewer for their careful review and insightful comments.

ADDITIONAL INFORMATION AND DECLARATIONS

Funding

The author received no funding for this work.

Competing Interests

Christian Wehenkel is an Academic Editor for PeerJ.

Author Contributions

- Christian Wehenkel conceived and designed the experiments, performed the experiments, analyzed the data, prepared figures and/or tables, authored and reviewed drafts of the paper, and approved the final draft.

Data Availability

The following information was supplied regarding data availability:

The raw data is available in [Tables 1–3](#).

REFERENCES

- Agrawal B. 2019.** Heterologous immunity: role in natural and vaccine-induced resistance to infections. *Frontiers in Immunology* **10**:164 DOI [10.3389/fimmu.2019.02631](https://doi.org/10.3389/fimmu.2019.02631).
- Armengaud J, Delaunay-Moisan A, Thuret J-Y, Anken E, Acosta-Alvear D, Aragón T, Arias C, Blondel M, Braakman I, Collet J-F, Courcol R, Danchin A, Deleuze J-F, Lavigne J-P, Lucas S, Michiels T, Moore ERB, Nixon-Abell J, Rossello-Mora R, Shi Z-L, Siccardi AG, Sitia R, Tillet D, Timmis KN, Toledano MB, Sluijs P, Vicenzi E. 2020.** The importance of naturally attenuated SARS-Cov-2 in the fight against Covid-19. *Environmental Microbiology* **22**(6):1997–2000.
- Arokiaraj MC. 2020.** Correlation of influenza vaccination and the COVID-19 severity. Available at <https://ssrn.com/abstract=3572814>.
- Beigel JH, Tomashek KM, Dodd LE, Mehta AK, Zingman BS, Kalil AC, Hohmann E, Chu HY, Luetkemeyer A, Kline S, Lopez de Castilla D, Finberg RW, Dierberg K, Tapson V, Hsieh L,**

- Patterson TF, Paredes R, Sweeney DA, Short WR, Touloumi G, Lye DC, Ohmagari N, Oh M-D, Ruiz-Palacios GM, Benfield T, Fätkenheuer G, Kortepeter MG, Atmar RL, Creech CB, Lundgren J, Babiker AG, Pett S, Neaton JD, Burgess TH, Bonnett T, Green M, Makowski M, Osinusi A, Nayak S, Lane HC. 2020. Remdesivir for the treatment of Covid-19—preliminary report. *New England Journal of Medicine* DOI 10.1056/NEJMoa2007764.
- Canyon MJ, He L, Thomsen S. 2020. Lockdowns and COVID-19 deaths in Scandinavia. *Covid Economics* 26:17–42.
- Courtemanche C, Garuccio J, Le A, Pinkston J, Yelowitz A. 2020. Strong social distancing measures in the United States reduced the COVID-19 growth rate: study evaluates the impact of social distancing measures on the growth rate of confirmed COVID-19 cases across the United States. *Health Affairs* 10:1377.
- Cowling BJ, Fang VJ, Nishiura H, Chan K-H, Ng S, Ip DKM, Chiu SS, Leung GM, Peiris JSM. 2012. Increased risk of noninfluenza respiratory virus infections associated with receipt of inactivated influenza vaccine. *Clinical Infectious Diseases* 54(12):1778–1783 DOI 10.1093/cid/cis307.
- Eikenberry SE, Mancuso M, Iboi E, Phan T, Eikenberry K, Kuang Y, Kostelich E, Gumel AB. 2020. To mask or not to mask: modeling the potential for face mask use by the general public to curtail the COVID-19 pandemic. *Infectious Disease Modelling* 5:293–308.
- Escobar LE, Molina-Cruz A, Barillas-Mury C. 2020. BCG vaccine protection from severe coronavirus disease 2019 (COVID-19). *Proceedings of the National Academy of Sciences* 117(30):17720–17726 DOI 10.1073/pnas.2008410117.
- Fink G, Orlova-Fink N, Schindler T, Grisi S, Ferrer AP, Daubenberger C, Brentani A. 2020. Inactivated trivalent influenza vaccine is associated with lower mortality among Covid-19 patients in Brazil. *medRxiv* DOI 10.1101/2020.06.29.20142505.
- Fischer EP, Fischer MC, Grass D, Henrion I, Warren WS, Westman E. 2020. Low-cost measurement of facemask efficacy for filtering expelled droplets during speech. *Science Advances* 6(36):eabd3083 DOI 10.1126/sciadv.abd3083.
- Flaxman S, Mishra S, Gandy A, Unwin HJT, Mellan TA, Coupland H, Whittaker C, Zhu H, Berah T, Eaton JW, Monod M, Ghani AC, Donnelly CA, Riley S, Vollmer MAC, Ferguson NM, Okell LC, Bhatt S, Imperial College COVID-19 Response Team. 2020. Estimating the effects of non-pharmaceutical interventions on COVID-19 in Europe. *Nature* 584:257–261.
- Goodridge HS, Ahmed SS, Curtis N, Kollmann TR, Levy O, Netea MG, Pollard AJ, Van Crevel R, Wilson CB. 2016. Harnessing the beneficial heterologous effects of vaccination. *Nature Reviews Immunology* 16(6):392–400 DOI 10.1038/nri.2016.43.
- Graham BS. 2020. Rapid COVID-19 vaccine development. *Science* 368(6494):945–946 DOI 10.1126/science.abb8923.
- Hallatschek O, Fisher DS. 2014. Acceleration of evolutionary spread by long-range dispersal. *Proceedings of the National Academy of Sciences* 111(46):E4911–E4919 DOI 10.1073/pnas.1404663111.
- Isaacs A, Lindenmann J. 1957. Virus interference. I. The interferon. *Proceedings of the Royal Society of London: Series B-Biological Sciences* 147(927):258–267.
- Khaitov M, Laza-Stanca V, Edwards MR, Walton RP, Rohde G, Contoli M, Papi A, Stanciu LA, Kotenko SV, Johnston SL. 2009. Respiratory virus induction of alpha-, beta- and lambda-interferons in bronchial epithelial cells and peripheral blood mononuclear cells. *Allergy* 64(3):375–386.

- Le Couteur DG, Anderson RM, Newman AB. 2020.** COVID-19 is a disease of older people. *Journals of Gerontology Series A Biological Sciences and Medical Sciences* **75(9)**:glaa077 DOI [10.1093/gerona/glaa077](https://doi.org/10.1093/gerona/glaa077).
- Leffler CT, Ing EB, Lykins JD, Hogan MC, McKeown CA, Grzybowski A. 2020.** Association of country-wide coronavirus mortality with demographics, testing, lockdowns, and public wearing of masks. *medRxiv* DOI [10.1101/2020.05.22.20109231](https://doi.org/10.1101/2020.05.22.20109231).
- Leung NY, Bulterys MA, Bulterys PL. 2020.** Predictors of COVID-19 incidence, mortality, and epidemic growth rate at the country level. *medRxiv* DOI [10.1101/2020.05.15.20101097](https://doi.org/10.1101/2020.05.15.20101097).
- Li K, Wu J, Wu F, Guo D, Chen L, Fang Z, Li C. 2020.** The clinical and chest CT features associated with severe and critical COVID-19 pneumonia. *Investigative Radiology* **55(6)**:327–331.
- Marín-Hernández D, Schwartz RE, Nixon DF. 2020.** Epidemiological evidence for association between higher influenza vaccine uptake in the elderly and lower COVID-19 deaths in Italy. *Journal of Medical Virology* DOI [10.1002/jmv.26120](https://doi.org/10.1002/jmv.26120).
- Mathews JD, Chesson JM, McCaw JM, McVernon J. 2009.** Understanding influenza transmission, immunity and pandemic threats. *Influenza and Other Respiratory Viruses* **3(4)**:143–149 DOI [10.1111/j.1750-2659.2009.00089.x](https://doi.org/10.1111/j.1750-2659.2009.00089.x).
- McGill J, Heusel JW, Legge KL. 2009.** Innate immune control and regulation of influenza virus infections. *Journal of Leukocyte Biology* **86(4)**:803–812 DOI [10.1189/jlb.0509368](https://doi.org/10.1189/jlb.0509368).
- Murray KA, Preston N, Allen T, Zambrana-Torrel C, Hosseini PR, Daszak P. 2015.** Global biogeography of human infectious diseases. *Proceedings of the National Academy of Sciences* **112(41)**:12746–12751 DOI [10.1073/pnas.1507442112](https://doi.org/10.1073/pnas.1507442112).
- Netea MG, Domínguez-Andrés J, Barreiro LB, Chavakis T, Divangahi M, Fuchs E, Joosten LAB, Van der Meer JWM, Mhlanga MM, Mulder WJM, Riksen NP, Schlitzer A, Schultze JL, Benn CS, Sun JC, Xavier RJ, Latz E. 2020.** Defining trained immunity and its role in health and disease. *Nature Reviews Immunology* **20(6)**:375–388 DOI [10.1038/s41577-020-0285-6](https://doi.org/10.1038/s41577-020-0285-6).
- Nguyen TTM, Lafond KE, Nguyen TX, Tran PD, Nguyen HM, Do TT, Ha NT, Seward JF, McFarland JW. 2020.** Acceptability of seasonal influenza vaccines among health care workers in Vietnam in 2017. *Vaccine* **38(8)**:2045–2050.
- Ozili PK, Arun T. 2020.** Spillover of COVID-19: impact on the Global Economy. Available at <https://ssrn.com/abstract=3562570>.
- Petrovsky N. 2015.** Comparative safety of vaccine adjuvants: a summary of current evidence and future needs. *Drug Safety* **38(11)**:1059–1074 DOI [10.1007/s40264-015-0350-4](https://doi.org/10.1007/s40264-015-0350-4).
- Pawlowski C, Puranik A, Bandi H, Venkatakrishnan AJ, Agarwal V, Kennedy R, O'Horo JC, Gores GJ, Williams AW, Halamka J, Badley AD, Venky Soundararajan. 2020.** Exploratory analysis of immunization records highlights decreased SARS-CoV-2 rates in individuals with recent non-COVID-19 vaccinations. *medRxiv* DOI [10.1101/2020.07.27.20161976](https://doi.org/10.1101/2020.07.27.20161976).
- Qin C, Zhou L, Hu Z, Zhang S, Yang S, Tao Y, Xie C, Ma K, Shang K, Wang W, Tian D-S. 2020.** Dysregulation of immune response in patients with COVID-19 in Wuhan, China. *Clinical Infectious Diseases* **71(15)**:762–768 DOI [10.1093/cid/ciaa248](https://doi.org/10.1093/cid/ciaa248).
- R Core Team. 2017.** *R: a language and environment for statistical computing*. Vienna: The R Foundation for Statistical Computing. Available at <http://www.R-project.org>.
- RECOVERY Collaborative Group. 2020.** Dexamethasone in hospitalized patients with Covid-19—preliminary report. *New England Journal of Medicine* DOI [10.1056/NEJMoa2021436](https://doi.org/10.1056/NEJMoa2021436).

- Seppälä E, Viskari H, Hoppu S, Honkanen H, Huhtala H, Simell O, Ilonen J, Knip M, Hyöty H. 2011. Viral interference induced by live attenuated virus vaccine (OPV) can prevent otitis media. *Vaccine* 29(47):8615–8618 DOI 10.1016/j.vaccine.2011.09.015.
- Skórka P, Grzywacz B, Moroń D, Lenda M. 2020. The macroecology of the COVID-19 pandemic in the Anthropocene. *PLOS ONE* 15(7):e0236856 DOI 10.1371/journal.pone.0236856.
- Strobl C, Boulesteix AL, Kneib T, Augustin T, Achim Zeileis A. 2008. Conditional variable importance for random forests. *BMC Bioinformatics* 9(1):307 DOI 10.1186/1471-2105-9-307.
- Venables WN, Ripley BD. 1999. Chapter 10: Tree-based methods. In: Chambers J, Eddy W, Härdle W, Sheather S, Tierney L, eds. *Modern Applied Statistics with S-PLUS*. Third Edition. New York: Springer-Verlag, 303–327.
- Wickham H, Chang W, Wickham MH. 2013. Package ‘ggplot2’. *Computer software manual*. R package version 0.9.3.1. Available at <http://cran.r-project.org/web/packages/ggplot2/ggplot2.pdf>.
- Williams CK, Engelhardt A, Cooper T, Mayer Z, Ziem A, Scrucca L, Kuhn MM. 2018. Package ‘caret’. Available at <https://github.com/topepo/caret/>.
- Wolff GG. 2020. Influenza vaccination and respiratory virus interference among Department of Defense personnel during the 2017–2018 influenza season. *Vaccine* 38(2):350–354 DOI 10.1016/j.vaccine.2019.10.005.
- Yancy CW. 2020. COVID-19 and African Americans. *JAMA* 323(19):1891–1892 DOI 10.1001/jama.2020.6548.
- Yuen KS, Ye ZW, Fung SY, Chan CP, Jin DY. 2020. SARS-CoV-2 and COVID-19: the most important research questions. *Cell & Bioscience* 10(1):1–5 DOI 10.1186/s13578-019-0370-3.